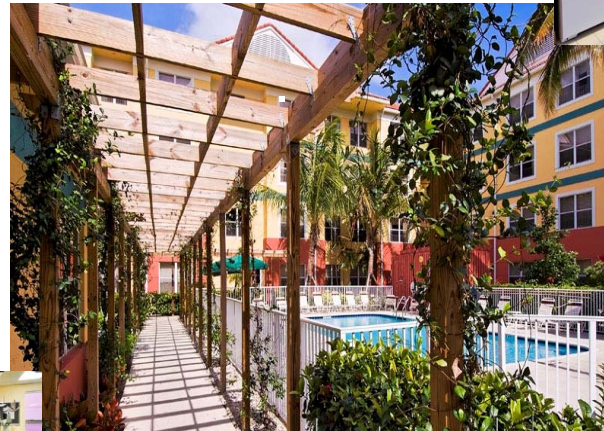




*For your next trip, stay with us at the Residence Inn by Marriott Plantation and discover why we are not just a place to sleep, we're a place to call home!*



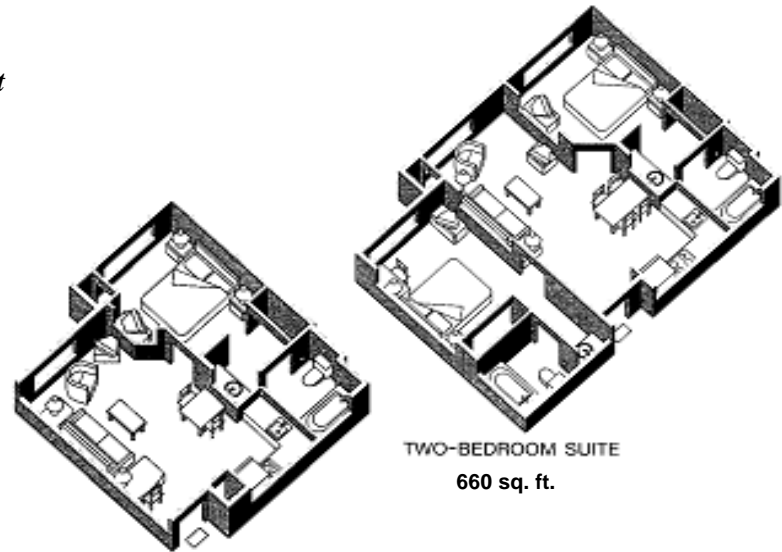
130 N. University Drive  
Plantation FL 33324  
Phone: 954-626-5741  
[www.marriott.com/fllpt](http://www.marriott.com/fllpt)

## ***Welcome to the Residence Inn by Marriott - Plantation***

*...your "Home away from Home"*

**Spacious one and two bedroom suites, with separate living, dining room to relax and well-lit working area. Featuring fully equipped kitchens complete with full-size refrigerator, stovetop, microwave, coffee maker, cooking & eating utensils and dishwasher.**

- \*Complimentary high-speed wired Internet access*
- \*Complimentary HomeTouch breakfast buffet and waffle station*
- \*Complimentary Weekly manager's reception featuring BBQ night – serving light fare, beer, wine & soft drinks*
- \*Complimentary grocery shopping service*
- \*Complimentary business center*
- \*Complimentary 1800 access calls*
- \*Complimentary parking*
- \*Daily housekeeping service*
- \*Sport-Court*
- \*Complimentary 24 hour fitness center*
- \*Out door heated Pool (3'5" to 6' deep) & Jacuzzi*
- \*BBQ Grill for your use*
- \*Coin laundry on site*
- \*Valet laundry and dry cleaning*
- \*Complimentary Sun Sentinel & USA Today Newspaper*
- \*24 hour Market & ATM on site*



ONE-BEDROOM SUITE

370 sq. ft.

TWO-BEDROOM SUITE

660 sq. ft.

# Residence Inn by Marriott - Plantation



## MEETING ROOM

Complimentary Wi-Fi, drop-down Screen, Podium & Whiteboard  
Natural light & Blackout curtains  
On ground level for easy access  
Outside catering allowed

**A=550 sq. ft. (18.10" x 29.6')**

Classroom - 27  
Rounds - 40  
U/Shape - 15  
Conf. Style - 20

**B=300 sq. ft. (14' x 21.6')**

Rounds - 32  
U/Shape - 9  
Conf. Style - 12

## ROOM INVENTORY

Total suites 138  
Studio - 32  
One bedroom suites - 74  
Two bedroom suites - 32  
Accessible suites - 8  
Tax currently 11%

## TRANSPORATION

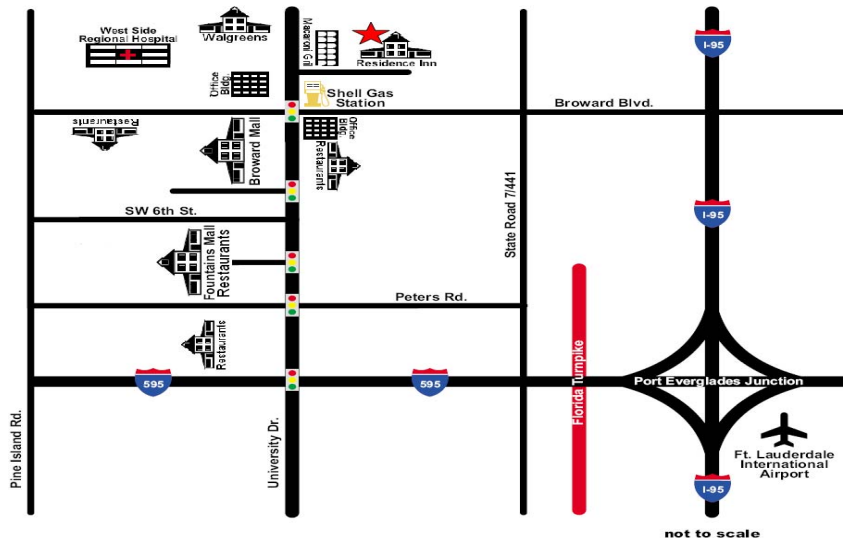
Amtrak / Tri-Rail - 1 mile  
1-800-872-7245  
200 SW 21<sup>st</sup> Terrace

## Plantation City Tram

954-797-2640  
BCT West Terminal- #1

## TAXI

- Ft Lauderdale Airport - 10.5 miles \$38
- Miami Airport - 27.8 miles \$95
- Palm Beach Airport - 48 miles \$125
- Port Everglades - 11.8 miles \$40
- Port of Miami - 28.6 miles \$95
- Coral Springs Mall - 8.4 miles \$35
- Galleria Mall - \$50
- Dolphin Mall - 34.2 miles \$80
- Seminole Hard Rock - 7 miles \$30
- Las Olas - 12 miles \$38
- Riverfront - 11 miles \$35
- Ft. Lauderdale Beach - 11 miles \$40
- South Beach - 30 miles \$90
- Bank Atlantic Center - 8.5 miles \$35
- American Airline Arena - 27.6 miles \$90



## AIRPORT: Fort Lauderdale Airport

Taxi is only \$38 / Airport Super Shuttle \$25

Take I-595 West

Exit University Drive

Make a right turn at stop-light onto University Drive

Cross over Broward Blvd

Turn right onto SW 1st Street

Residence Inn by Marriott Plantation

is behind Macaroni Grill

# Residence Inn by Marriott - Plantation



## RESTAURANTS

- Bin 595 Eclectic Grille & Wine Bar (3 mi) Eclectic
- Boston Market (.53 mi) American
- Cantina Laredo (.96 mi) Mexican
- Carrabba's Italian Grill (1.11 mi) Italian
- Chili's Grill & Bar (.96 mi) American
- Grumpy Dicks Seafood Grill (.96 mi) Seafood
- J Alexander's (.64 mi) American
- Kiko Japanese Restaurant (.96 mi) Japanese
- La Brasa (.47 mi) American
- Las Vegas Cuban Cuisine (2.5 mi)
- Macaroni Grill (.04 mi) Italian
- Olive Garden (.96 mi) Italian
- Padrino's Cuban Cuisine (.96 mi) Spanish
- Red Lobster (.96 mi) Seafood
- Smokey Bones BBQ & Grill (.96 mi) Bar-B-Q
- Stomboli Pizza (.96 mi) Pizza
- Sweet Tomatoes (.96 mi) Sandwiches
- TGI Friday's (.5 mi) American
- Too Jay's Gourmet Deli (.96 mi) Deli

## ARENA STADIUM

- Bank Atlantic Center – 8.5 miles
- Dolphin Stadium – 14.4 miles

## CONVENTION CENTER

- Broward Convention Center – 11.2 miles

## LOCAL ATTRACTION

- Billie Swamp Safari – 55.7 miles
- Boomers – 9.6 miles
- Butterfly World – 15 miles
- Davie Pro Rodeo – 5.9 miles
- Ft. Lauderdale Beach - 11 miles
- Graves Museum of Archaeology – 10 miles
- IGFA Fishing Hall of fame – 8. miles
- Int'l Swimming Hall of Fame – 15 miles
- Las Olas Blvd. – 12 miles
- Museum of Discovery & Science
- Blockbuster Imax Theater – 12 miles
- Plantation Aquatic Complex – 2.3 miles
- Seminole Hard Rock & Casino – 7 miles
- Wannado City – 6.14 miles

## LOCAL ENTERTAINMENT

- Ghost, Mysteries & Legends Tours - Walking tours of old Fort Lauderdale
- Seminole Okalee Indian Village – Replica Seminole Camp
- Trolley Tour – of Rich & Famous homes, water ways, las olas & art district
- Bank Atlantic Center – Center of all top talent
- Broward Center of the Performing Arts
- Boomers – Family entertainment center
- Stanahan house – Beautifully restored , turn of the century riverside home
- Everglades holiday Park – Sightseeing tours

## SHOPPING

- Broward Mall
- Las Olas Riverfront
- The Fountains Shoppes
- Sawgrass Mills Outlet Mall
- DCOTA
- Festival Flea Market
- Swap Shop
- Bass Pro Shop

## GOLF

- Plantation preserve Golf Course – 1.2 m
- Springtree Country Club – 3.7 miles
- Arrowhead Golf Course – 3 miles
- Sunrise Country Club – 3.3 miles
- Lauderhill Golf course – 5.1 miles
- Sunrise lakes Phase 3 – 4 miles
- Ft. Lauderdale Country Club – 3.7 miles
- Jacaranda Golf Club – 1.4 miles